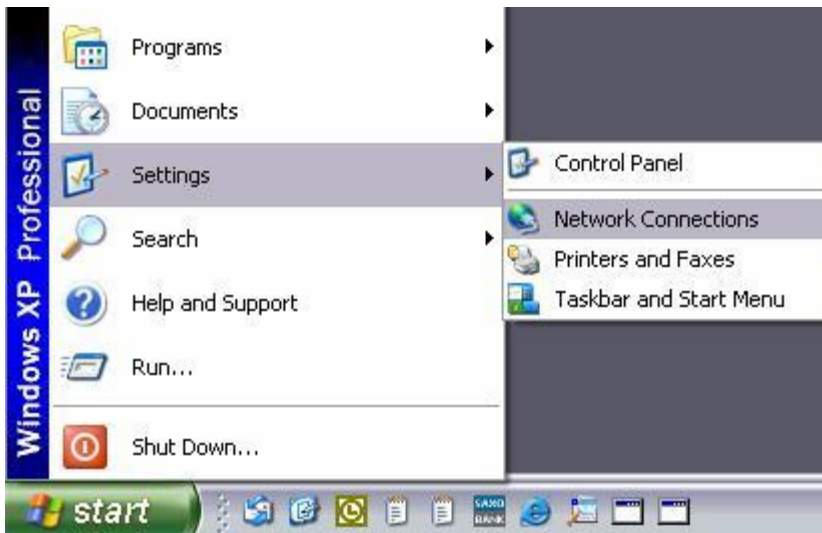


To configure you Windows XP internal firewall, please go through the following steps:

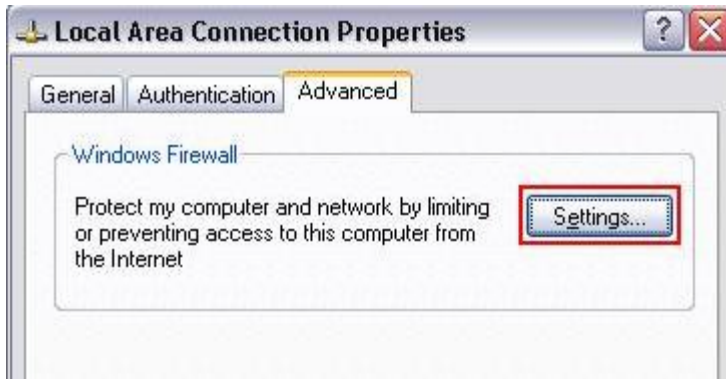
Go to "Start" --> "Settings" --> "Network connections"



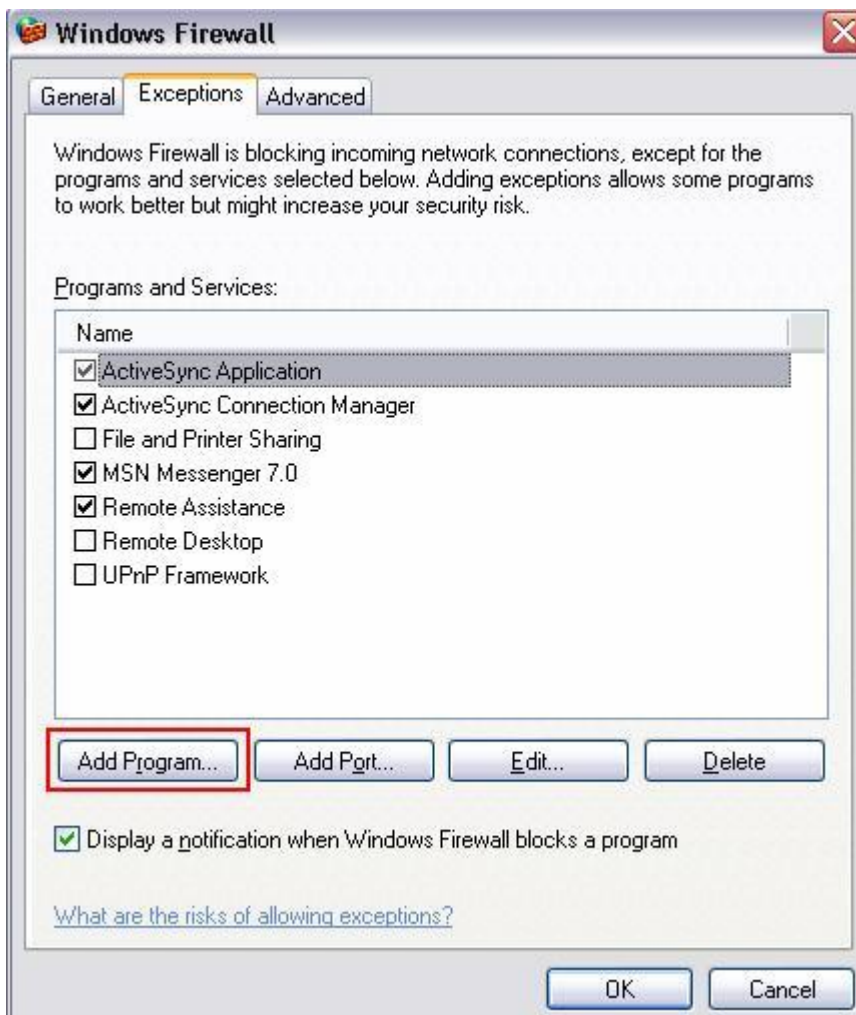
Right-click on the "local Area Connection", If you have got a dial-up connection, right-click on the "Dial-up" icon --> And go to "properties"



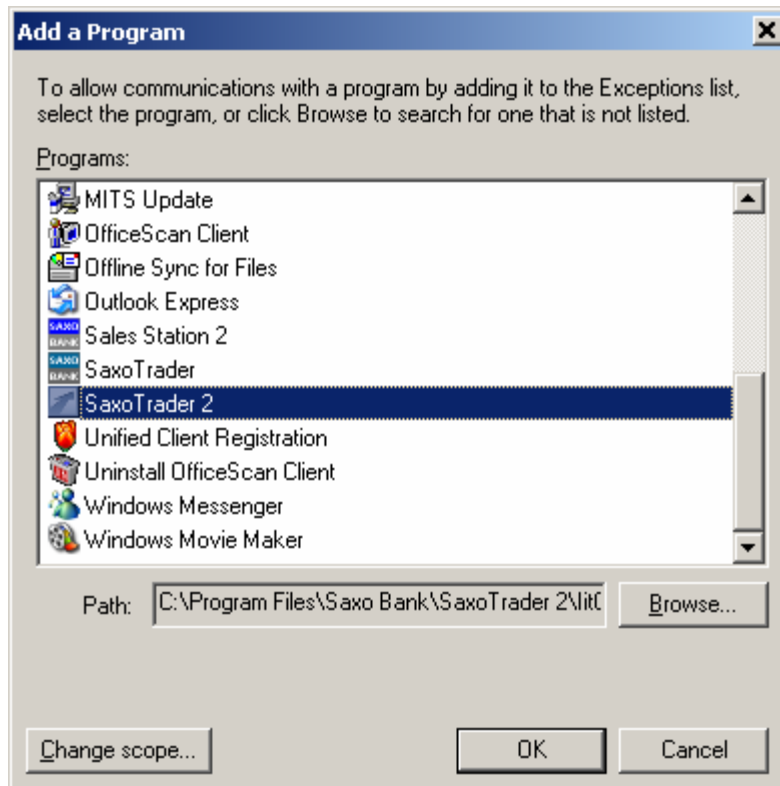
Select the tab called "Advanced" --> Then click "Settings"



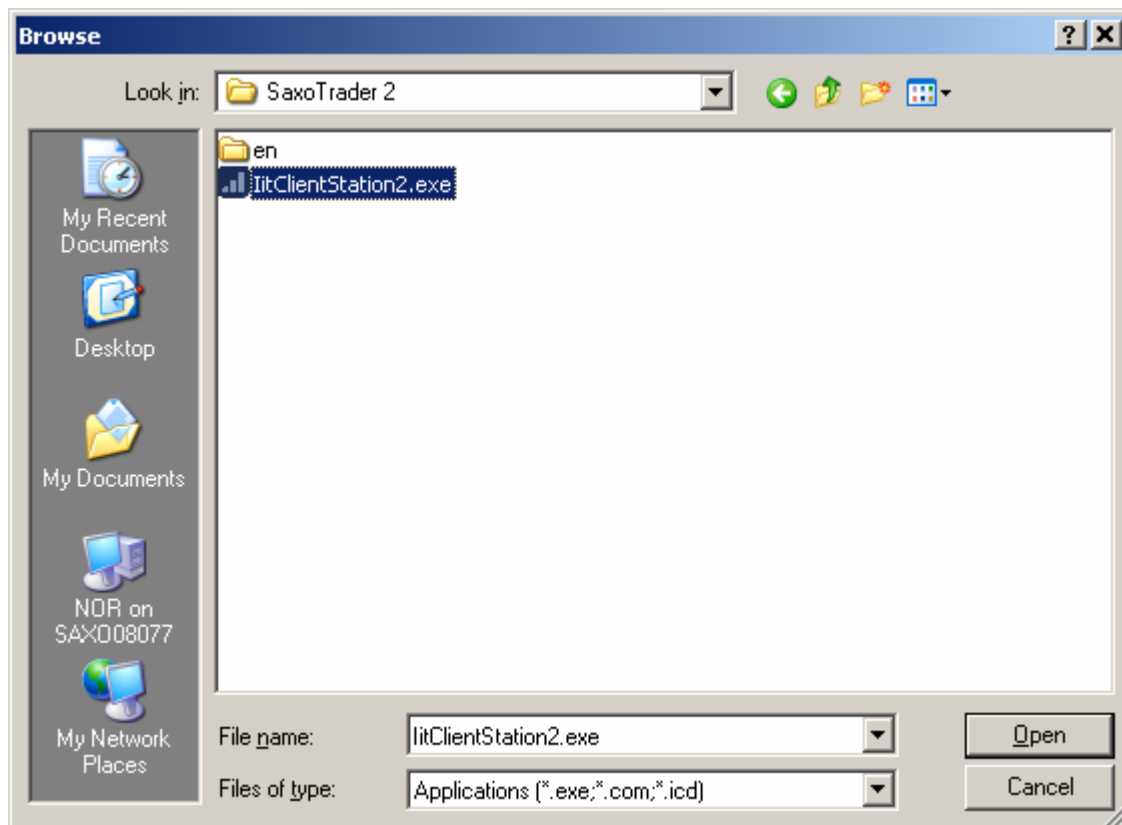
In the "firewall configuration" window, select the tab called "Exceptions" --> And then click on the button where it says "Add Program"



In the next window, click on "Browse"



At the next window, browse for the file litClientStation2.exe. When you find this, double-click it. Default path is: C:\Program Files\Saxo Bank\SaxoTrader 2\




At the next window, in the list of programs, the Trader should be listed there. Then simply click "OK"

You will then get back to the "Firewall configuration" window --> Click on the button called "Add Port" --> You will now see the Port Configuration window (Picture below)

Fill out the port configuration window, as shown below (Both pictures)



The screenshot shows the "Add a Port" dialog box. The title bar reads "Add a Port" with a close button. The main text says: "Use these settings to open a port through Windows Firewall. To find the port number and protocol, consult the documentation for the program or service you want to use." Below this, there are two text input fields: "Name:" containing "Trading Platform" and "Port number:" containing "1001". Underneath the port number field are two radio buttons: "TCP" (which is selected) and "UDP". At the bottom left, there is a link: "What are the risks of opening a port?". At the bottom, there are three buttons: "Change scope...", "OK", and "Cancel".



The screenshot shows the "Add a Port" dialog box. The title bar reads "Add a Port" with a close button. The main text says: "Use these settings to open a port through Windows Firewall. To find the port number and protocol, consult the documentation for the program or service you want to use." Below this, there are two text input fields: "Name:" containing "Trading Platform" and "Port number:" containing "443". Underneath the port number field are two radio buttons: "TCP" (which is selected) and "UDP". At the bottom left, there is a link: "What are the risks of opening a port?". At the bottom, there are three buttons: "Change scope...", "OK", and "Cancel".

Click "OK" to the next 2 windows, and reboot your PC